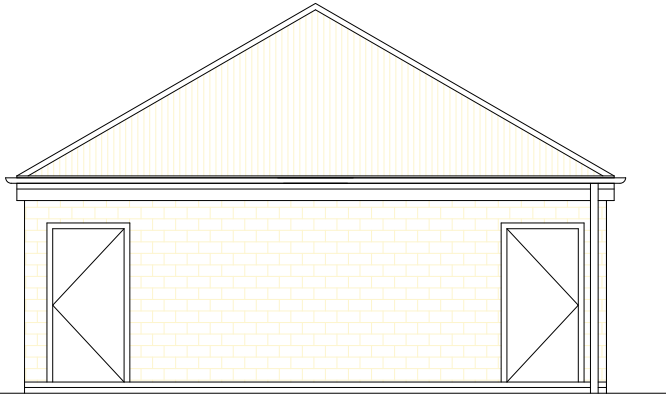
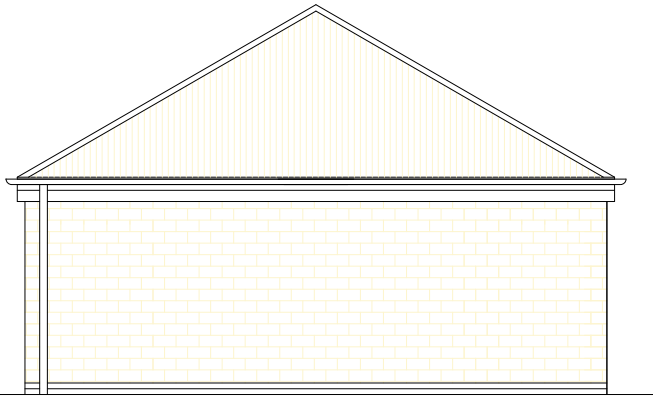


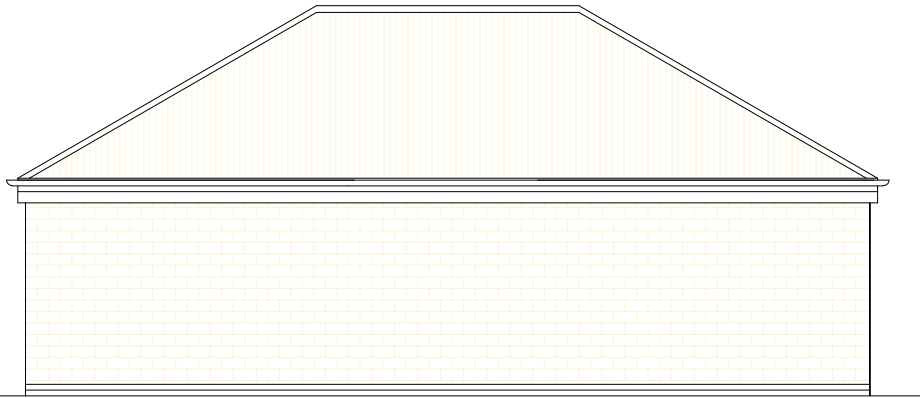
**Front Elevation 2 Team Football and Rugby changing room**



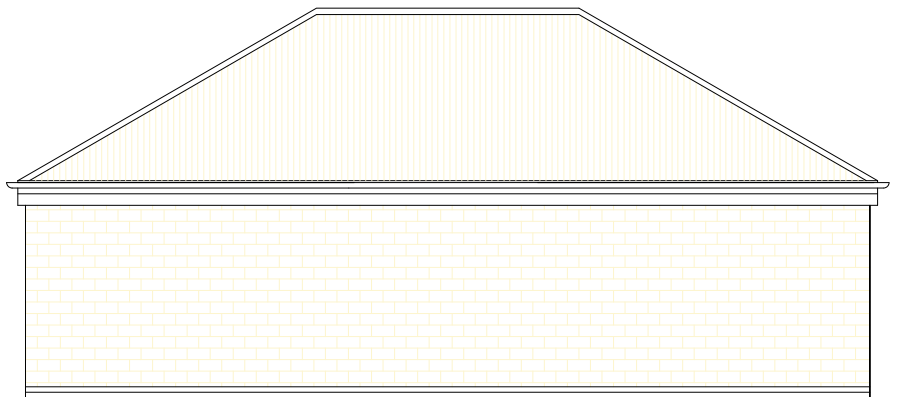
**Rear Elevation 2 Team Football and Rugby changing room**



**Side Elevation 2 Team Football and Rugby changing room**



**Side Elevation 2 Team Football and Rugby changing room**



Rev\_00

**Note:**

This drawing is an indicative layout to show the principles for general arrangement and relationship of spaces. Refer to Sport England / NGB design guidance for further information.

**Outline external finishes specification**

- Clay interlocking tiles fixed via battens and roofing felt to timber trussed rafters at 450mm centres. Roof void insulated with quilt.
- uPVC 1/2 round rainwater gutter and round downpipe fixed to timber fascia and soffit. Fascia and soffit to be gloss paint finish.
- External cavity brickwork wall construction with insulated cavity and brick or facing blockwork external wall finish.
- DPC to be formed with 2 course of Class B blue engineering bricks or similar.
- External doors and windows to be in accordance with Building Regulations Part L & Sport England's Design Guidance Note - Accessible Sports Facilities.

